
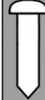
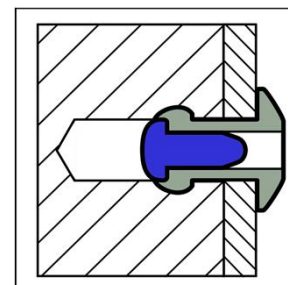
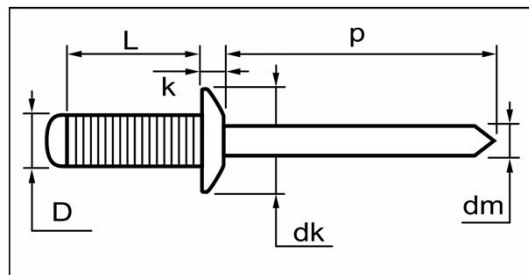


Grooved Type blind rivets






	MATERIALS	FINISH
	aluminium alloy [AlMg 2,5]	polished
	carbon steel	zinc plated



AlMg2,5 / steel Dome Head

dimensions in mm

D	L	grip range	article number	dk	k	dm	p	tensile	shear
	+0,9/-0	max.			max.	ref.	min.	[N]	[N]
3,2	10,0	6,0	H2G-32100						
[+0,35/-0]	14,0	10,0	H2G-32140	6,0	1,40	1,80	27	930	820
				[+/-0,24]					
3,4mm									
4,0	8,0	4,0	H2G-40080						
[+0,35/-0]	10,0	6,0	H2G-40100	8,0	1,70	2,20	27	1.400	1.200
	12,0	8,0	H2G-40120	[+/-0,29]					
4,3mm	16,0	12,0	H2G-40160						
4,8	8,0	4,0	H2G-48080						
[+0,35/-0]	10,0	6,0	H2G-48100						
	12,0	8,0	H2G-48120						
5,1mm	14,0	10,0	H2G-48140						
	16,0	12,0	H2G-48160	9,5	2,0	2,65	27	2.300	1.600
	18,0	14,0	H2G-48180	[+/-0,29]					
	20,0	16,0	H2G-48200						
	25,0	21,0	H2G-48250						
	30,0	26,0	H2G-48300						