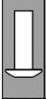
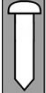
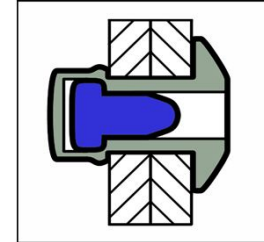
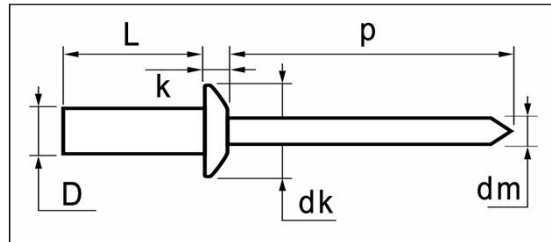





Seal-link blind rivets



	MATERIALS	FINISH
	aluminium alloy	polished
	aluminium alloy	polished



aluminium alloy / aluminium alloy Dome Head dimensions in mm

D	L	grip range	article number	dk	k	dm	p	tensile	shear
	+0,9/-0	min. ~ max.			max.	ref.	min.	[N]	[N]
3,2	6,5	0,5 ~ 2,0	QLF-32065						
[+/-0,08]	8,0	2,0 ~ 3,5	QLF-32080						
	9,5	3,5 ~ 5,0	QLF-32095	6,0	1,40	1,70	27	490	450
3,3mm	10,7	5,0 ~ 6,5	QLF-32107	[+/-0,24]					
	12,7	6,5 ~ 8,0	QLF-32127						
4,0	8,0	1,0 ~ 3,5	QLF-40080						
[+/-0,08]	9,5	3,5 ~ 4,5	QLF-40095						
	11,0	4,5 ~ 6,5	QLF-40110	8,0	1,70	2,20	27	820	580
4,1mm	12,7	6,5 ~ 8,0	QLF-40127	[+/-0,29]					
	15,0	8,0 ~ 10,5	QLF-40150						
4,8	8,0	1,0 ~ 3,0	QLF-48080						
[+/-0,08]	9,5	3,0 ~ 4,5	QLF-48095						
	11,0	4,5 ~ 6,0	QLF-48110						
4,9mm	12,5	6,0 ~ 7,5	QLF-48125	9,5	2,00	2,65	27	1.120	900
	14,0	7,5 ~ 9,0	QLF-48140	[+/-0,29]					
	16,0	9,0 ~ 11,0	QLF-48160						
	18,0	11,0 ~ 13,0	QLF-48180						
	21,0	13,0 ~ 16,0	QLF-48210						
	25,0	16,0 ~ 20,0	QLF-48250						