
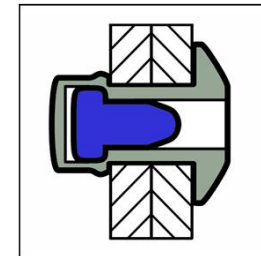
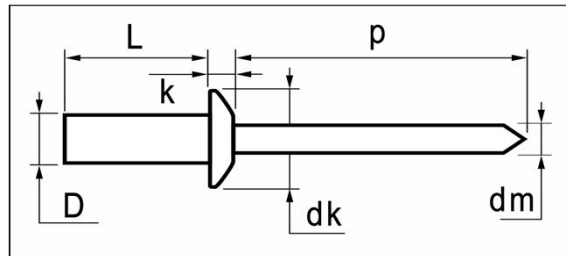


# Seal-link blind rivets






	MATERIALS	FINISH
	stainless steel A2	polished
	stainless steel A1	polished



stainless steel A2 / stainless steel A1 Dome Head

dimensions in mm

D	L	grip range	article number	dk	k	dm	p	tensile	shear
	+0,9/-0	min. ~ max.			max.	ref.	min.	[ N ]	[ N ]
<b>3,2</b>	6,0	0,5 ~ 1,5	<b>QBFS-32060</b>						
[+0,08/-0,10]	8,0	1,5 ~ 3,0	<b>QBFS-32080</b>	6,0	1,40	1,90	27	2.500	2.000
	9,5	3,0 ~ 5,0	<b>QBFS-32095</b>	[+/-0,24]					
3,3mm	12,0	5,0 ~ 7,0	<b>QBFS-32120</b>						
<b>4,0</b>	6,0	0,5 ~ 1,5	<b>QBFS-40060</b>						
[+0,08/-0,10]	8,0	1,5 ~ 3,0	<b>QBFS-40080</b>						
	10,0	3,0 ~ 5,0	<b>QBFS-40100</b>	8,0	1,70	2,30	27	4.000	3.000
4,1mm	12,0	5,0 ~ 6,5	<b>QBFS-40120</b>	[+/-0,29]					
	15,0	6,5 ~ 10,5	<b>QBFS-40150</b>						
<b>4,8</b>	8,0	1,0 ~ 3,0	<b>QBFS-48080</b>						
[+0,08/-0,10]	9,5	3,0 ~ 4,5	<b>QBFS-48095</b>						
	12,0	4,5 ~ 6,0	<b>QBFS-48120</b>	9,5	2,00	2,90	27	5.500	4.500
4,9mm	16,0	6,0 ~ 10,5	<b>QBFS-48160</b>	[+/-0,29]					
	20,0	10,5 ~ 14,0	<b>QBFS-48200</b>						