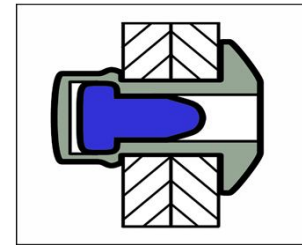
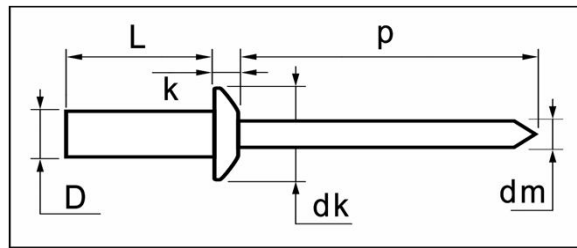


Seal-link blind rivets



	MATERIALS	FINISH
	carbon steel	zinc plated
	carbon steel	zinc plated



steel / steel Dome Head

dimensions in mm

D	L	grip range	article number	dk	k	dm	p	tensile	shear
	+0,9/-0	min. ~ max.				ref.	min.	[N]	[N]
3,2	6,0	0,5 ~ 1,5	GF-32060						
[+0,08/-0,10]	8,0	1,5 ~ 3,0	GF-32080	6,0	1,0	1,90	27	1.700	1.500
	9,5	3,0 ~ 5,0	GF-32095	[+/-0,24]	[+/-0,30]				
3,3mm	12,0	5,0 ~ 6,5	GF-32120						
4,0	6,0	0,5 ~ 1,5	GF-40060						
[+0,08/-0,10]	8,0	1,5 ~ 3,0	GF-40080						
	10,0	3,0 ~ 5,0	GF-40100	8,0	1,4	2,30	27	2.500	2.300
4,1mm	12,0	5,0 ~ 6,5	GF-40120	[+/-0,29]	[+/-0,30]				
	15,0	6,5 ~ 10,5	GF-40150						
4,8	8,0	1,0 ~ 3,0	GF-48080						
[+0,08/-0,10]	9,5	3,0 ~ 4,5	GF-48095	9,5	1,7	2,90	27	3.800	2.900
	12,0	4,5 ~ 6,0	GF-48120	[+/-0,29]	[+/-0,30]				
4,9mm	16,0	6,0 ~ 10,5	GF-48160						