

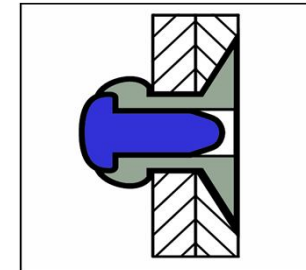
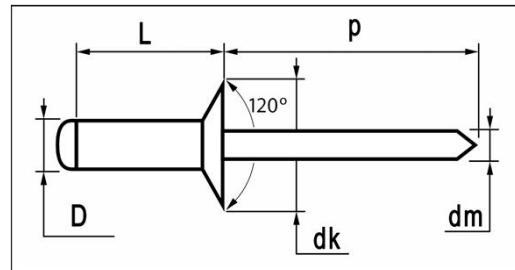


# Riv-link standard blind rivets






	MATERIALS	FINISH
	aluminium alloy [AlMg 3,5]	polished
	carbon steel	zinc plated



## AlMg3,5 / steel Countersunk Head

dimensions in mm

D	L	grip range	article number	dk	k	dm	p	tensile	shear
	+0,9/-0	min. ~ max.			max.	ref.	min.	[ N ]	[ N ]
<b>4,0</b>	6,0	~ 2,0	<b>H3K2-40060</b>						
[+0,08/-0,15]	8,0	2,0 ~ 4,0	<b>H3K2-40080</b>						
	10,0	4,0 ~ 6,0	<b>H3K2-40100</b>	7,5	1,2	2,10	27	1.600	1.200
4,1mm	12,0	6,0 ~ 8,0	<b>H3K2-40120</b>	[+0/-0,5]					
	14,0	8,0 ~ 10,0	<b>H3K2-40140</b>						
	16,0	10,0 ~ 12,0	<b>H3K2-40160</b>						
<b>4,8</b>	8,0	~ 3,5	<b>H3K2-48080</b>						
[+0,08/-0,15]	10,0	3,5 ~ 5,5	<b>H3K2-48100</b>						
	12,0	5,5 ~ 7,5	<b>H3K2-48120</b>						
4,9mm	14,0	7,5 ~ 9,5	<b>H3K2-48140</b>						
	16,0	9,0 ~ 11,0	<b>H3K2-48160</b>	9,0	1,5	2,70	27	2.230	1.690
	18,0	11,0 ~ 13,0	<b>H3K2-48180</b>	[+0/-0,5]					
	20,0	13,0 ~ 15,0	<b>H3K2-48200</b>						
	22,0	15,0 ~ 17,0	<b>H3K2-48220</b>						
	25,0	17,0 ~ 20,0	<b>H3K2-48250</b>						
<b>5,0</b>	8,0	~ 3,5	<b>H3K2-50080</b>						
[+0,08/-0,15]	10,0	3,5 ~ 5,5	<b>H3K2-50100</b>						
	12,0	5,5 ~ 7,5	<b>H3K2-50120</b>						
5,1mm	14,0	7,5 ~ 9,5	<b>H3K2-50140</b>	9,0	1,5	2,70	27	2.500	2.000
	16,0	9,0 ~ 11,0	<b>H3K2-50160</b>	[+0/-0,5]					
	18,0	11,0 ~ 13,0	<b>H3K2-50180</b>						
	20,0	13,0 ~ 15,0	<b>H3K2-50200</b>						
	25,0	15,0 ~ 20,0	<b>H3K2-50250</b>						