

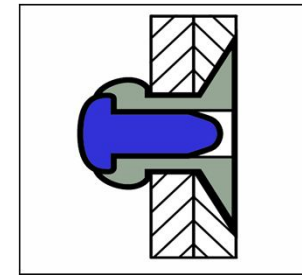
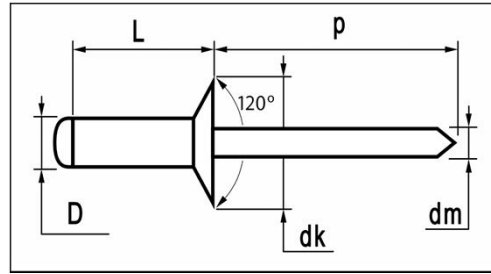


# Riv-link standard blind rivets






	MATERIALS	FINISH
	aluminium alloy [AlMg 2,5]	polished
	carbon steel	zinc plated



## AlMg2,5 / steel Countersunk Head

dimensions in mm

D	L	grip range	article number	dk	k	dm	p	tensile	shear
	+0,9/-0	min. ~ max.			max.	ref.	min.	[ N ]	[ N ]
<b>2,4</b>	6,0	~ 3,5	<b>H2K2-24060</b>						
[+0,08/-0,10]	8,0	3,5 ~ 5,5	<b>H2K2-24080</b>	5,0	1,0	1,45	27	353	315
	10,0	5,5 ~ 7,5	<b>H2K2-24100</b>	[+0/-0,4]					
2,5mm									
<b>3,0</b>	6,0	~ 3,5	<b>H2K2-30060</b>						
[+0,08/-0,10]	8,0	3,5 ~ 5,5	<b>H2K2-30080</b>	6,0	1,0	1,75	27	810	620
	10,0	5,5 ~ 7,5	<b>H2K2-30100</b>	[+0/-0,4]					
3,1mm	12,0	7,5 ~ 9,5	<b>H2K2-30120</b>						
<b>3,2</b>	6,0	~ 3,0	<b>H2K2-32060</b>						
[+0,08/-0,10]	8,0	3,0 ~ 5,0	<b>H2K2-32080</b>	6,0	1,0	1,75	27	980	760
	10,0	5,0 ~ 7,0	<b>H2K2-32100</b>	[+0/-0,4]					
3,3mm	12,0	7,0 ~ 9,0	<b>H2K2-32120</b>						
	14,0	9,0 ~ 11,0	<b>H2K2-32140</b>						