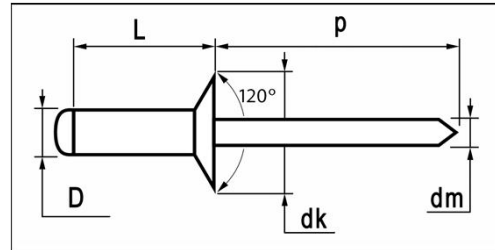


Riv-link standard blind rivets







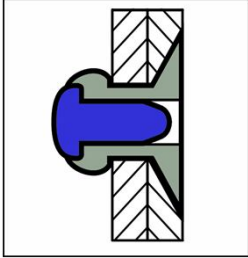
	MATERIALS	FINISH
	carbon steel	zinc plated
	carbon steel	zinc plated



steel / steel Countersunk Head

d

D	L	grip range	article number	dk	dm	p
	+0,9/-0	min. ~ max.			ref.	min.
3,0	6,0	~ 3,5	GK2-30060			
[+0,08/-0,10]	8,0	3,5 ~ 5,5	GK2-30080	6,0	1,90	27
	10,0	5,5 ~ 7,5	GK2-30100	[+0/-0,4]		
3,1mm	12,0	7,5 ~ 9,5	GK2-30120			
3,2	6,0	1,5 ~ 3,0	GK2-32060			
[+0,08/-0,10]	8,0	3,0 ~ 5,0	GK2-32080	6,0	2,00	27
	10,0	5,0 ~ 7,0	GK2-32100	[+0/-0,4]		
3,3mm	12,0	7,0 ~ 9,0	GK2-32120			
4,0	6,0	~ 2,0	GK2-40060			
[+0,08/-0,15]	8,0	2,0 ~ 4,0	GK2-40080			
	10,0	4,0 ~ 6,0	GK2-40100	7,5	2,50	27
4,1mm	12,0	6,0 ~ 8,0	GK2-40120	[+0/-0,5]		
	14,0	8,0 ~ 10,0	GK2-40140			
	16,0	10,0 ~ 12,0	GK2-40160			
4,8	8,0	2,0 ~ 3,5	GK2-48080			
[+0,08/-0,15]	10,0	3,5 ~ 5,5	GK2-48100			
	12,0	5,5 ~ 7,5	GK2-48120	9,0	2,90	27
4,9mm	14,0	7,5 ~ 9,5	GK2-48140	[+0/-0,5]		
	16,0	9,0 ~ 11,0	GK2-48160			
	18,0	11,0 ~ 13,0	GK2-48180			
	20,0	13,0 ~ 15,0	GK2-48200			



imensions in mm

tensile	shear
[N]	[N]

1.125 950

1.285 1.100

2.200 1.700

3.100 2.900
