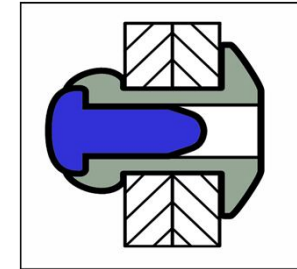
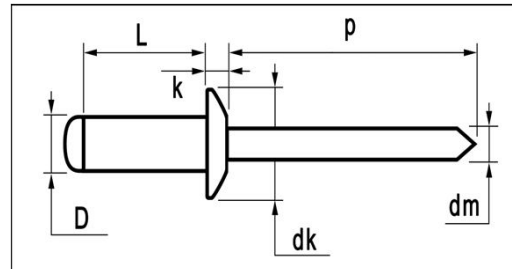


# Riv-link standard blind rivets







	MATERIALS	FINISH
	copper alloy	polished
	bronze	polished



## Copper / Bronze Dome Head

dimensions in mm

D	L	grip range min. ~ max.	article number	dk	k	dm ref.	p min.	tensile [ N ]	shear [ N ]
3,0	6,0	1,5 ~ 3,5	CRK-30060						
[+0,08/-0,10]	8,0	3,5 ~ 5,5	CRK-30080	6,5	0,8	1,95	27	700	600
	10,0	5,5 ~ 7,5	CRK-30100	[+0/-0,7]	[+/-0,20]				
3,1mm	12,0	7,5 ~ 9,5	CRK-30120						
3,2	6,0	1,5 ~ 3,0	CRK-32060						
[+0,08/-0,10]	8,0	3,0 ~ 5,0	CRK-32080	6,5	0,8	1,95	27	800	700
	10,0	5,0 ~ 7,0	CRK-32100	[+0/-0,7]	[+/-0,20]				
3,3mm	12,0	7,0 ~ 9,0	CRK-32120						
4,0	6,0	1,0 ~ 2,0	CRK-40060						
[+0,08/-0,15]	8,0	2,0 ~ 4,0	CRK-40080						
	10,0	4,0 ~ 6,0	CRK-40100	8,0	1,0	2,10	27	1.500	1.000
4,1mm	12,0	6,0 ~ 8,0	CRK-40120	[+0/-1,0]	[+/-0,30]				
	14,0	8,0 ~ 10,0	CRK-40140						
	16,0	10,0 ~ 12,0	CRK-40160						
4,8	8,0	2,0 ~ 3,5	CRK-48080						
[+0,08/-0,15]	10,0	3,5 ~ 5,5	CRK-48100						
	12,0	5,5 ~ 7,5	CRK-48120	9,5	1,1	2,70	27	2.000	1.500
4,9	14,0	7,5 ~ 9,5	CRK-48140	[+0/-1,0]	[+/-0,30]				
	16,0	9,0 ~ 11,0	CRK-48160						