
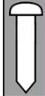
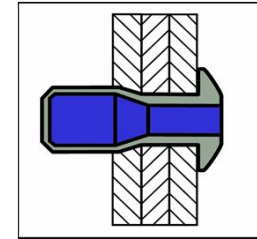
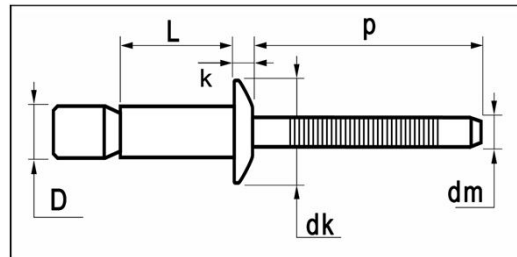


P-link blind rivets





	MATERIALS	FINISH
	stainless steel A2	polished
	stainless steel A2	polished



stainless steel A2 / stainless steel A2 Dome Head

dimensions in mm

D	L	grip range min. ~ max.	article number	dk	k	dm ref.	p min.	tensile [N]	shear [N]
4,8	10,0	1,6 ~ 6,4	QBZ-48100						
[+/-0,09]	14,0	1,6 ~ 11,1	QBZ-48140	9,6	2,40	3,00	27	4.800	6.400
 4,9~5,2mm				[+/-0,29]					
6,4	14,0	2,0 ~ 9,5	QBZ-64140						
[+/-0,11]	20,0	2,0 ~ 15,9	QBZ-64200	13,0	3,10	4,00	27	8.240	10.690
 6,6~6,9mm				[+/-0,35]					