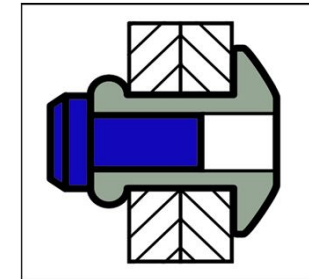
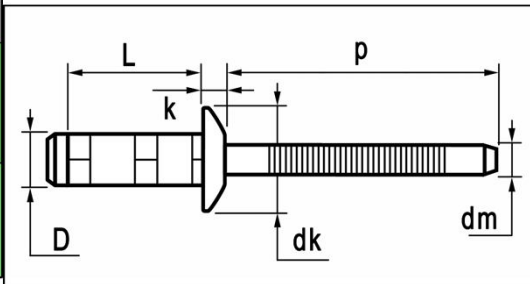


# Multi-link blind rivets






	MATERIALS	FINISH
	stainless steel A2	polished
	stainless steel A2	polished



stainless steel A2 / stainless steel A2 Dome Head

dimensions in mm

D	L	grip range min. ~ max.	article number	dk	k max.	dm ref.	p min.	tensile [ N ]	shear [ N ]
3,2	8,0	1,0 ~ 4,0	QBS-32080						
[+0,05/-0,13]	10,0	3,0 ~ 6,0	QBS-32100	7,2	1,00	2,10	27	1.800	1.650
	12,0	4,0 ~ 8,0	QBS-32120	[+/-0,25]	[+/-0,15]				
3,3mm									
4,0	10,0	1,5 ~ 5,0	QBS-40100						
[+0,05/-0,13]	12,0	3,5 ~ 7,0	QBS-40120	8,1	1,20	2,45	27	3.350	4.200
	15,0	6,0 ~ 9,5	QBS-40150	[+/-0,25]	[+/-0,15]				
4,1mm									
4,8	10,0	1,5 ~ 5,0	QBS-48100						
[+0,05/-0,13]	12,0	3,0 ~ 7,0	QBS-48120	9,8	1,75	3,20	27	4.300	5.000
	15,0	6,5 ~ 10,0	QBS-48150	[+/-0,25]	[+/-0,25]				
4,9mm	17,5	9,0 ~ 12,5	QBS-48175						