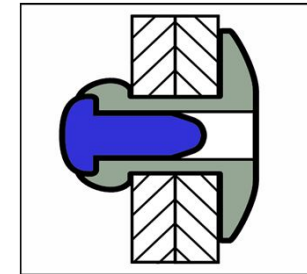
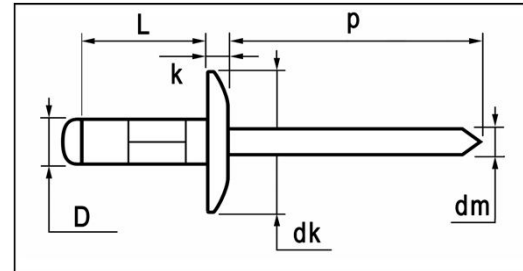


# Multi-link blind rivets



	MATERIALS	FINISH
	aluminium alloy [AlMg 2,5]	polished
	carbon steel	zinc plated



## AlMg2,5 / steel Large Head

dimensions in mm

D	L	grip range min. ~ max.	article number	dk	k max.	dm ref.	p min.	tensile [ N ]	shear [ N ]
<b>3,2</b>	8,0	0,5 ~ 5,0	<b>H2SL095-32080</b>	9,5 [+0/-0,5]	2,00	1,75	27	980	760
[+0,05/-0,13]	9,5	2,0 ~ 6,5	<b>H2SL095-32095</b>						
	12,5	5,0 ~ 9,5	<b>H2SL095-32125</b>						
3,3 ~ 3,5mm	16,0	8,5 ~ 13,0	<b>H2SL095-32160</b>						
<b>4,0</b>	9,5	1,0 ~ 6,0	<b>H2SL120-40095</b>	12,0 [+0/-0,5]	2,50	2,10	27	1.600	1.200
[+0,05/-0,13]	12,5	4,0 ~ 9,0	<b>H2SL120-40125</b>						
	17,0	8,5 ~ 13,5	<b>H2SL120-40170</b>						
4,1 ~ 4,3mm	20,0	11,5 ~ 16,5	<b>H2SL120-40200</b>						
<b>4,8</b>	10,0	1,0 ~ 5,0	<b>H2SL140-48100</b>	14,0 [+0/-0,5]	2,50	2,70	27	2.350	1.690
[+0,05/-0,13]	12,5	3,0 ~ 7,5	<b>H2SL140-48125</b>						
	15,0	5,0 ~ 10,0	<b>H2SL140-48150</b>						
4,9 ~ 5,2mm	17,0	7,0 ~ 12,0	<b>H2SL140-48170</b>						
	20,0	10,0 ~ 15,0	<b>H2SL140-48200</b>						