

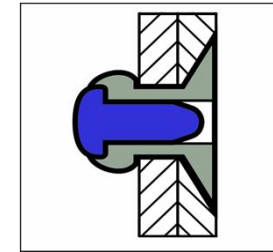
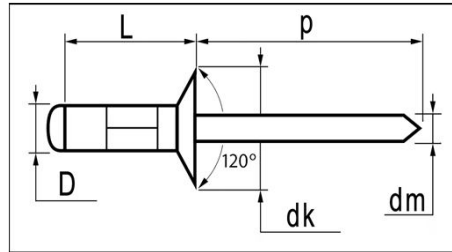


Multi-link blind rivets






	MATERIALS	FINISH
	aluminium alloy [AlMg 2,5]	polished
	carbon steel	zinc plated



AlMg2,5 / steel Countersunk Head

dimensions in mm

D	L	grip range min. ~ max.	article number	dk	k	dm ref.	p min.	tensile [N]	shear [N]
3,2 [+0,05/-0,13]  3,3 ~ 3,5mm	8,0	1,5 ~ 5,0	H2S2-32080	6,0 [+/-0,24]	1,20	1,75	27	980	760
	9,7	2,5 ~ 6,5	H2S2-32097						
	12,5	5,0 ~ 9,5	H2S2-32125						
4,0 [+0,05/-0,13]  4,1 ~ 4,3mm	9,5	2,0 ~ 6,0	H2S2-40095	8,0 [+/-0,29]	1,40	2,10	27	1.600	1.200
	12,5	4,0 ~ 9,0	H2S2-40125						
	17,0	8,5 ~ 13,5	H2S2-40170						
4,8 [+0,05/-0,13]  4,9 ~ 5,2mm	10,0	1,0 ~ 5,0	H2S2-48100	9,5 [+/-0,29]	1,60	2,70	27	2.350	1.690
	12,5	3,0 ~ 7,5	H2S2-48125						
	15,0	5,0 ~ 10,0	H2S2-48150						
	17,0	7,0 ~ 12,0	H2S2-48170						
	20,0	10,0 ~ 15,0	H2S2-48200						