
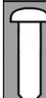
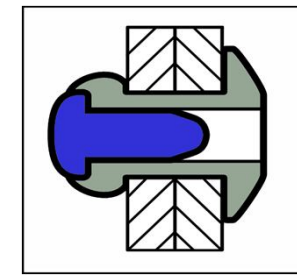
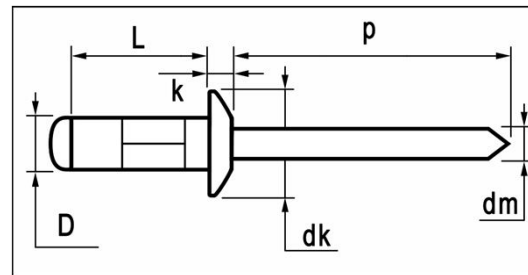


Multi-link blind rivets







	MATERIALS	FINISH
	aluminium alloy [AlMg 2,5]	polished
	carbon steel	zinc plated



AlMg2,5 / steel Dome Head

dimensions in mm

D	L	grip range min. ~ max.	article number	dk	k max.	dm ref.	p min.	tensile [N]	shear [N]
3,0	8,0	0,5 ~ 5,0	H2S-30080						
[+0,05/-0,13]	9,5	2,0 ~ 6,5	H2S-30095	6,0	1,40	1,6	27	810	620
 3,1 ~ 3,3mm	12,5	5,0 ~ 9,5	H2S-30125	[+/-0,24]					
3,2	8,0	0,5 ~ 5,0	H2S-32080						
[+0,05/-0,13]	9,5	2,0 ~ 6,5	H2S-32095	6,0	1,40	1,75	27	980	760
 3,3 ~ 3,5mm	12,5	5,0 ~ 9,5	H2S-32125	[+/-0,24]					
4,0	9,5	1,0 ~ 6,0	H2S-40095						
[+0,05/-0,13]	12,5	4,0 ~ 9,0	H2S-40125	8,0	1,70	2,10	27	1.600	1.200
 4,1 ~ 4,3mm	17,0	8,5 ~ 13,5	H2S-40170	[+/-0,29]					
4,8	10,0	1,0 ~ 5,0	H2S-48100						
[+0,05/-0,13]	12,5	3,0 ~ 7,5	H2S-48125						
 4,9 ~ 5,2mm	15,0	5,0 ~ 10,0	H2S-48150	9,5	2,00	2,70	27	2.350	1.690
	17,0	7,0 ~ 12,0	H2S-48170	[+/-0,29]					
	20,0	10,0 ~ 15,0	H2S-48200						
	24,8	14,5 ~ 19,5	H2S-48248						