
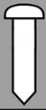
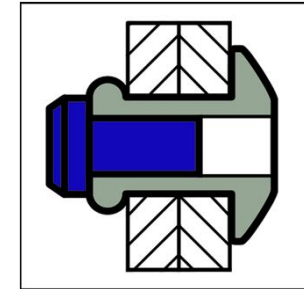
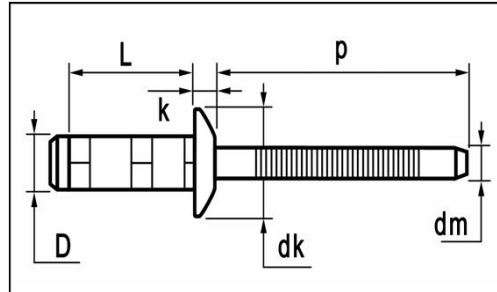


# Multi-link blind rivets






	MATERIALS	FINISH
	carbon steel	zinc plated
	carbon steel	zinc plated



## steel / steel Dome Head

dimensions in mm

D	L	grip range min. ~ max.	article number	dk	k	dm ref.	p min.	tensile [ N ]	shear [ N ]
3,2	7,0	1,0 ~ 3,5	GS-32070						
[+0,05/-0,13]	9,0	2,0 ~ 5,5	GS-32090	7,2	1,00	2,10	27	1.700	1.500
	11,0	4,0 ~ 7,0	GS-32110	[+/-0,25]	[+/-0,15]				
3,3mm									
4,0	10,8	1,5 ~ 4,5	GS-40108						
[+0,05/-0,13]	12,5	3,0 ~ 6,5	GS-40125	8,1	1,20	2,45	27	2.350	1.955
	15,0	5,5 ~ 8,5	GS-40150	[+/-0,25]	[+/-0,15]				
4,1mm									
4,8	10,2	1,5 ~ 4,5	GS-48102						
[+0,05/-0,13]	12,7	3,5 ~ 7,5	GS-48127	9,8	1,75	3,10	27	3.600	3.335
	13,5	6,0 ~ 8,5	GS-48135	[+/-0,25]	[+/-0,15]				
4,9mm	17,5	8,0 ~ 12,0	GS-48175						