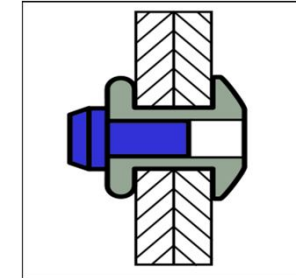
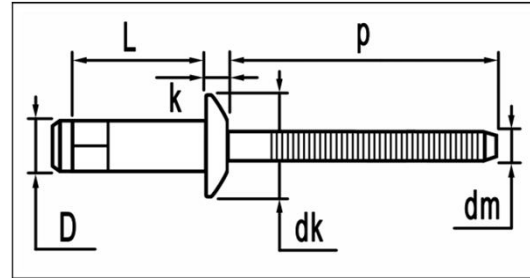


H-link blind rivets




	MATERIALS	FINISH
	carbon steel	zinc plated
	carbon steel	zinc plated



steel / steel Dome Head

dimensions in mm

D	L	grip range min. ~ max.	article number	dk	k	dm ref.	p min.	tensile [N]	shear [N]
6,4	9,0	1,5 - 3,5	GQ-64090						8.925
[+0,15/-0,05]	10,0	2,8 - 4,8	GQ-64100						10.200
	11,0	3,35 - 5,35	GQ-64110						10.625
6,7~6,9mm	12,0	4,8 - 6,8	GQ-64120						10.625
	14,0	6,8 - 8,8	GQ-64140	13,0	3,0	4,00	30	7.150	12.750
	15,0	7,5 - 9,5	GQ-64150	[+0,40/-0,20]	[+0,40/-0]				12.750
	16,0	8,8 - 10,8	GQ-64160						13.600
	17,0	9,8 - 11,8	GQ-64170						13.600
	18,0	10,8 - 12,8	GQ-64180						13.600
	19,0	11,8 - 13,8	GQ-64190						13.600